

## Print Data with Scanning Suite

---

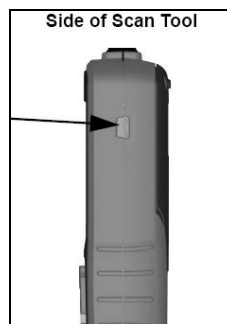
**Note:** Scanning Suite should already be installed on the PC. If it is not installed, it can be downloaded from <https://www.boschdiagnostics.com/diy/updates-and-downloads>

### ***Prepare the Tool***

1. Scan vehicle and view / record desired information (see User Manual for additional instructions regarding using the scan tool).
2. Disconnect the Tool from the vehicle.
3. In the **Main Menu** or **Diagnostic Menu**, arrow down to **Print Data** and press **ENTER**. The tool will display *Launch PC Printing Software Application*.



4. Plug the tool into the PC via the USB port.

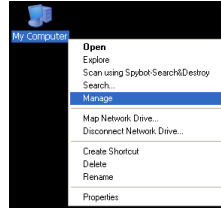


**Note:** The PC will recognize the tool and assign it a Virtual COM Port. It is necessary to know this COM port number to use the Print Data function.

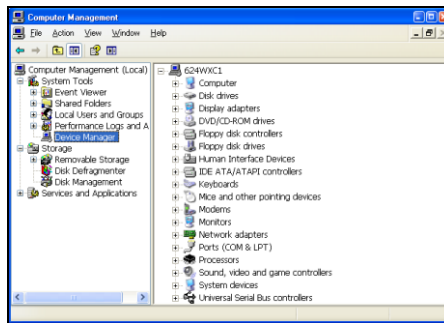
## Determine the Virtual COM Port number

5. To determine the assigned COM port number, open Windows **Device Manager**.

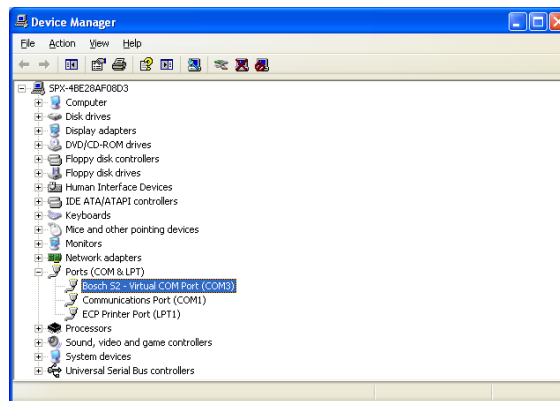
a. Right click on the **My Computer** icon and click **Manage**.



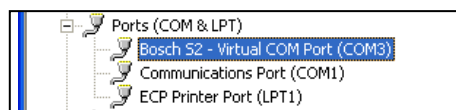
b. In the left column of the Computer Management window, click **Device Manager**.



c. In the right column of the Computer Management window, open the **Ports (COM & LPT)** icon.

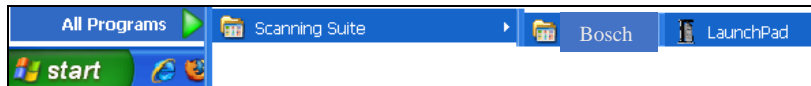


d. The Tool will be labeled as **Bosch S2 – Virtual COM Port** and the COM Port number will be in parenthesis next to it. Remember this number or write it down for later use.

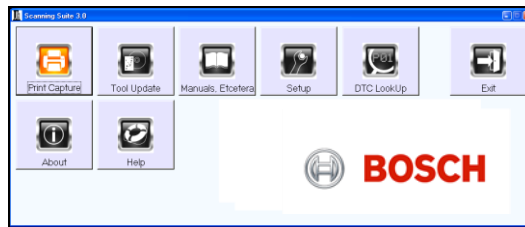


## Connecting the Tool

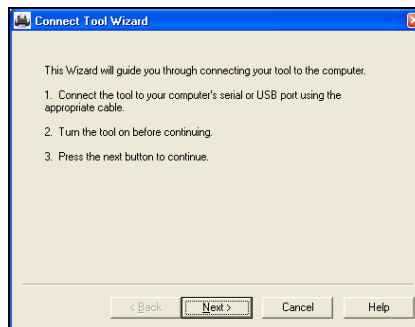
- Open Scanning Suite on the PC by double clicking the **BoschNA LaunchPad** shortcut **or** clicking **start/All Programs/Scanning Suite/BoschNA/LaunchPad**.



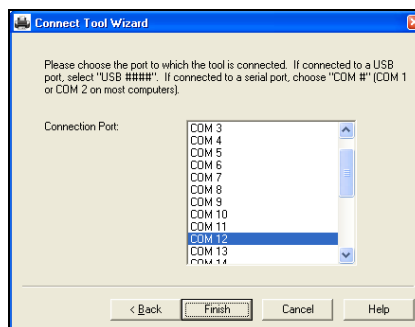
- Click **Print Capture** and the Connect Tool Wizard will appear.



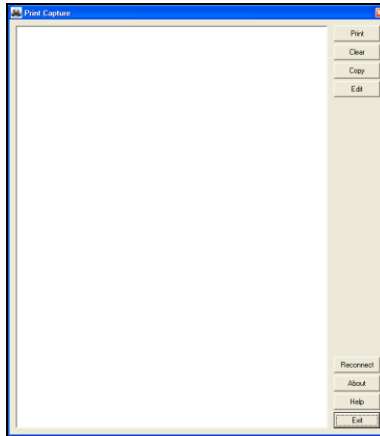
- Click **Next**.



- Select the appropriate COM Port number assigned by the PC and click **Finish**.

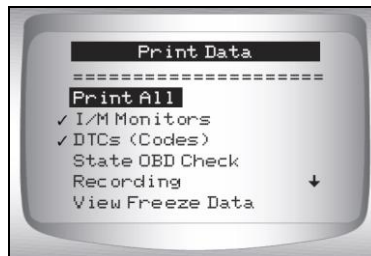


10. A blank Print Capture screen will appear and it is now ready to receive data from the Tool.



### ***Transfer the Stored Data to the PC***

11. On the Tool press **ENTER** to continue to the Print Data menu.



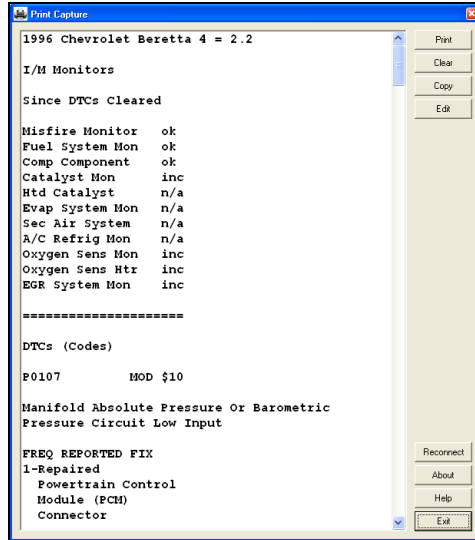
To select the data to send to the PC, use the **UP** or **Down** button and press **ENTER** on the desired information. The Tool will display *Sending Data via USB Port*

**Print All** will send all of the data stored on the Tool to the PC.

When printing a Recording, the Start Frame and End Frame need to be defined.

**Note:** The Print Data menu shows a check mark next to the items that have data. If there isn't a check mark next to the item, then this item cannot be selected until the appropriate function is run from the Diagnostic Menu when connected to a vehicle.

12. The data will appear in the Print Capture screen.



13. In the right column of the Print Capture window, there are different command buttons:

- a. **Print** will send the data to your printer.
- b. **Clear** will erase all of the contents in the Print Capture window. This will not erase the information stored in the tool.
- c. **Copy** will copy all of the contents in the Print Capture window to the clipboard. Then it can easily be pasted in a program of your choice.
- d. **Edit** will open the context in the Print Capture window in Notepad, where the text can be edited.
- e. **Reconnect** will allow you to restart the Connect Tool Wizard (step 8).
- f. **About** will display the version of Print Capture.
- g. **Help** will open the Scanning Suite Help menu.
- h. **Exit** will close the Print Capture application.

14. When finished, click **Exit** to close the Print Capture application. Then disconnect the Tool USB cable and power the tool off.